

Netween NVR Quick Installation Guide

COPYRIGHT BY NETWEEN INC. ALL RIGHTS RESERVED.
www.netween.co.kr

For more information, refer to the manual on the Netween website

netween

Table of Contents

1. Package contents
2. Device layout
3. Preparation
4. Initial Configuration
5. Mobile app settings
6. Product settings
 - 1) Connecting to cameras
 - 2) Play
 - 2) Time setup
 - 3) Sync
 - 4) Recording
 - 5) Log out

1. Package contents

Please check the contents of the package



Network NVR



AC adapter(12V2A)

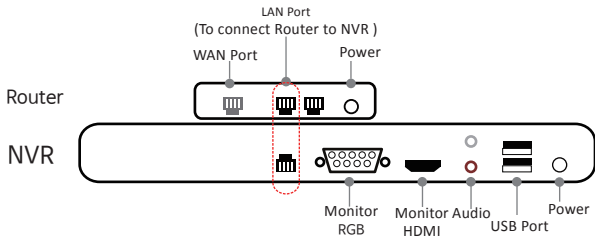


Mouse



Quick Installation Guide

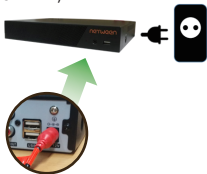
2. Device layout



3. Product Preparation

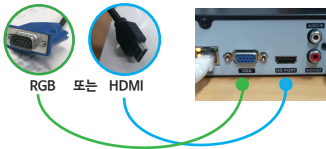
1

Connect the NVR to AC adaptor (DC12V 2A)



2

Connect your RGB or HDMI monitor cable to the port matched as below



3

Connect a LAN cable from your router to the NVR



4

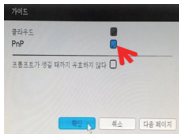
Connect the mouse usb to the NVR



4. Initial Configuration

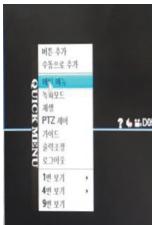
1

Check on PnP and click "OK"



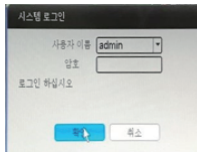
2

Click the mouse right button on the screen anywhere to go to Quick Menu, and click "Main menu"



3

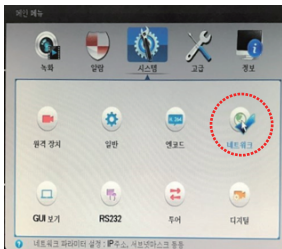
Leave the password as empty for now and click "Okay"



4. Initial Configuration

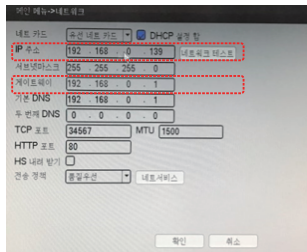
4

Click "System" and click "Network" in Main menu



5

See if IP address and gateway are filled in the cells as the example below



5. Mobile app settings

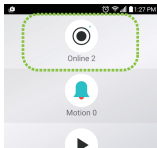
1

Tap "Between Cube" app on your smart phone to start the setting process



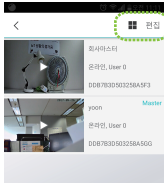
2

Tap "Online"



3

Tap "Edit" on the right top



4

Tap "Ok"



5

Activate OnVIF by tapping the OnVIF section



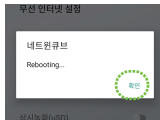
6

Tap "OK"



7

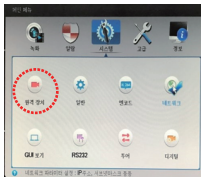
the rebooting message shows up when OnVIF is on.
Tap "OK" then your camera starts rebooting itself.
When it's done, NVR will be connected



6. Product settings - Connecting to cameras

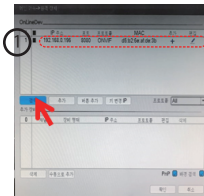
1

Click "Remote device" in the System tab on "Main menu"



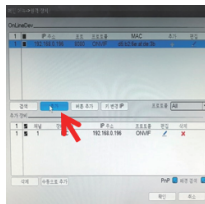
2

Click "Search" to see the cameras connected as the example below



3

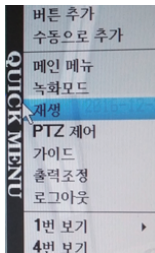
Check on the camera and click "Add"



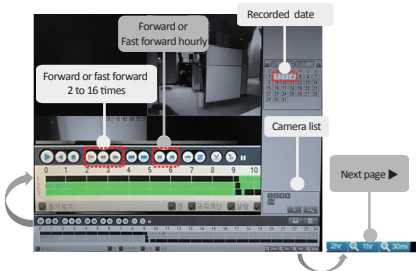
6. Product settings - Play

1

Click "Play" in Quick Menu

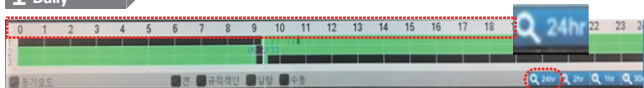


2

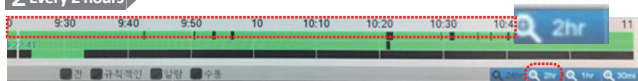


6. Product settings - Time setup

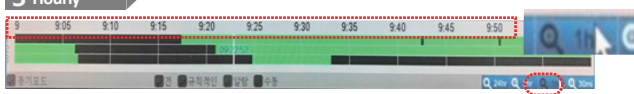
1 Daily



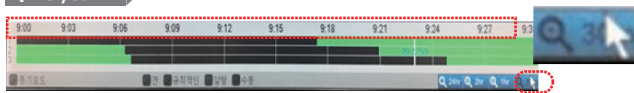
2 Every 2 hours



3 Hourly



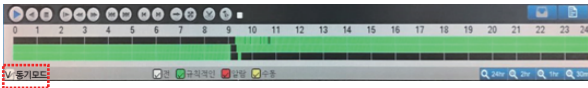
4 Every 30 min



6. Product settings - Sync

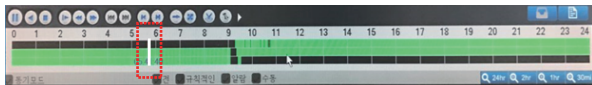
1 Sync

V check on Sync to watch simultaneously recorded movies from separate channels



1-1 on Sync

Check on Sync and click on the desired time to watch recorded movies at the same time



2 Without Sync

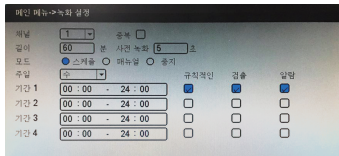
Uncheck on Sync and click on the desired time to watch the recorded movie you want



6. Product settings - Recording

1

Go to Recording set-up in Main menu



2

Please refer to the functions as table below

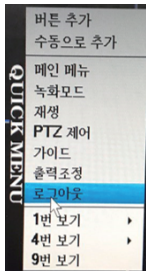
<Table 1>

- | | |
|---|---|
| 1 Channel
Select to set up a specific channel | 6 Week
To set up recording methods by weekly |
| 2 Copy
To copy recorded data and save to second hard disk simultaneously. (Only for two or more hard disks are equipped) | 7 Section 1~4
To set up recording modes for maximum 4 different sections |
| 3 Length
To set up maximum recording time
e.g.) record hourly | 8 Rule
Succession recording |
| 4 Recording
To set up motion alert and recording time for that section | 9 Detection
Motion recording |
| 5 Mode
Schedule: scheduled recording as assigned in the system
Manual: Recording by manual
Stop: Stop recording | 10 Alarm
Alarm recording (obstructed view or disconnection) |

6. Product settings - Log out

1

Click Log out in Quick Menu



2

Click Shut down





Netween Inc.

www.netween.com